

introducing



EVOLVE

by **INMODE**



TITE | TRIM
HANDS-FREE TECHNOLOGY

Thermal Body Contouring



THE NEXT GENERATION OF NON-INVASIVE, HANDS-FREE TECHNOLOGY DESIGNED TO REMODEL SKIN

According to The American Society for Aesthetic Plastic Surgery, in 2018 total non-invasive procedures grew at an impressive rate of +9% with over 3.3 million procedures performed¹. Patients continue to pursue non-invasive treatments that improve skin appearance without the associated risks or downtime of invasive procedures.

Evolve is an innovative **hands-free** contouring solution which maximizes both patient results and clinic resources. Providing your practice with the highest quality of body contouring available, while freeing your clinic personnel from hands-on procedures. The ultimate in medical grade technology, the Evolve contouring solution ensures your practice capitalizes on the high demand body sculpting trend.

¹2018 The American Society of Aesthetic Plastic Surgery, Cosmetic (Aesthetic) Surgery National Data Bank.



TITE ON EVOLVE

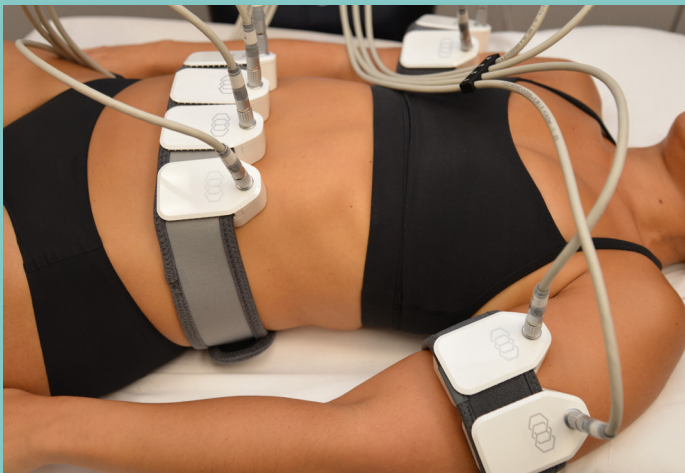
CUSTOMIZABLE HANDS-FREE THERMAL CONTOURING

Evolve Tite harnesses the power of RF energy to remodel skin and improve its appearance.

The 8 hands-free applicators deliver uniform and volumetric heating to the skin & sub-dermal layer, to provide customized pain-free patient solutions.

Evolve's proprietary algorithm provides unprecedented safety. RF energy is automatically adjusted when each applicator senses it has reached the optimal thermal response.

Each applicator is designed with built-in thermal sensors which monitor skin surface temperature in real time allowing the device to reach an optimal thermal profile to deliver exceptional results.



The combination of adjustable belts + the hands-free applicators facilitate the simultaneous treatment of multiple areas.

TRIM ON EVOLVE

CUSTOMIZABLE HANDS-FREE BODY CONTOURING & CELLULITE TREATMENT

Evolve Trim offers 6 hands-free applicators which deliver RF energy + a negative tissue vacuum. The patented RF energy and vacuum design deliver a uniform thermal affect to the deepest layers of subcutaneous fat to provide the maximum treatment.

Trim's 6 hands-free applicators enable your practice to simultaneously treat multiple body areas in one session.



BUILT WITH PATIENT SAFETY IN MIND

- » Built-in audible indicators sound when each applicator reaches the optimal temperature, providing patients with updates on their treatment progress.
- » Evolve is designed with a patient call button to allow clients to easily pause their treatment and have clinic staff make adjustments if required.
- » Evolve's treatment screen enables physicians to visually monitor the thermal effect of each applicator at any point during the procedure.
- » Evolve's color blind RF technology ensures it can safely and effectively be used on all skin types.

Power Output:	Up to 50 W
Output Frequency:	1 MHz
Temperature Cut-Off:	Real time temperature monitoring for all active applicators. Operator selectable up to 43°C
Tailored Treatment Times:	5 minute increments allow procedures to be completely customized to specific patient needs



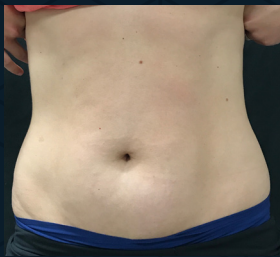
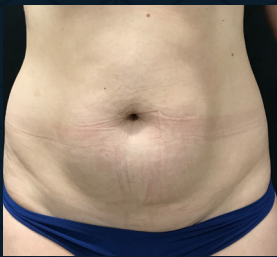
I N M O D E

TOLL FREE {855} 411 2639 | WWW.INMODEMD.COM

BEFORE & AFTER BASED ON BODYFX



DR. S. MULHOLLAND



DR. J. ROLLER

BEFORE & AFTER BASED ON PLUS



DR. B. RIDENOUR



DR. J. SHAOUL



MAXIMIZE YOUR REVENUE & BOTTOM LINE

- » Evolve's **hands-free** design and programable technology allow your practice to reallocate physician and clinician time to other patients and treatments while Evolve is in use.
- » Evolve allows you to offer both skin contraction and adipose tissue treatments with one device, driving multiple treatments & multiple revenue streams.